

Coldharbour Farm **Solar Park**



BSR
Energy





Introducing Coldharbour Farm Solar Park

BSR Energy is preparing to submit a planning application to Torridge District Council for a solar park on land at Coldharbour Farm, Ashreigney, Torridge, Devon, EX18 7NQ.

The solar park would have an approximate design capacity of 49.99 MW and would produce enough clean, renewable electricity to power 12,500 homes per year, a saving of 11,000 tonnes of CO₂.

What are the benefits of the Solar Park?

The main benefits of the proposed development are summarised below.

- It will assist Torridge District Council to reduce greenhouse gas emissions in line with local and national targets, in addition to supporting its strategy for its declared Climate Emergency.
- The proposed development will contribute towards the security of energy supply in North Devon through the provision of local, renewable energy supply.
- No public rights of way will be closed during or after construction of the solar park.
- New hedgerow planting is proposed to contain and screen the solar arrays from its surroundings.
- Ecological enhancements including wildflower and wild bird seed grasslands, and a range of breeding boxes for bats and birds are being considered as part of the application. We anticipate that the solar park will have a significant positive net biodiversity impact.
- This is a temporary development, allowing the land to rest for the period of operation.
- The proposed solar farm will not require Government subsidy.
- BSR Energy is committed to using local suppliers during construction and operation where possible.

Climate Emergency

In July 2019, Torridge District Council declared a Climate Emergency in recognition of the need to take urgent action in respect of climate change. As part of this declaration, Torridge District Council's aim is to achieve carbon neutrality by 2030. Cllr Cottle-Hunkin, Torridge District Councillor and Vice-Chair of the TDC Member Climate Emergency Working Group has said: *"It is clear that radical action is needed to fight global climate change. Torridge's Climate Emergency Working Group is therefore asking the government to make positive changes to enable the planning system to meet the challenge of building the nation's resilience to the real and immediate climate crisis."*

Our approach to consultation during the pandemic

In accordance with guidance issued by the UK Government's Chief Planner, which emphasised that planning applications that positively impact the country and local communities must continue to come forward, we invite you to provide feedback on our draft proposals in the following ways:

1 Fill in the feedback form that accompanies this public consultation brochure.

Please read through the leaflet and provide feedback to us by way of the free post feedback form that came with the brochure.

2 Attend our public consultation webinar and Q&A session on Wednesday December 16 from 6pm – 8pm.

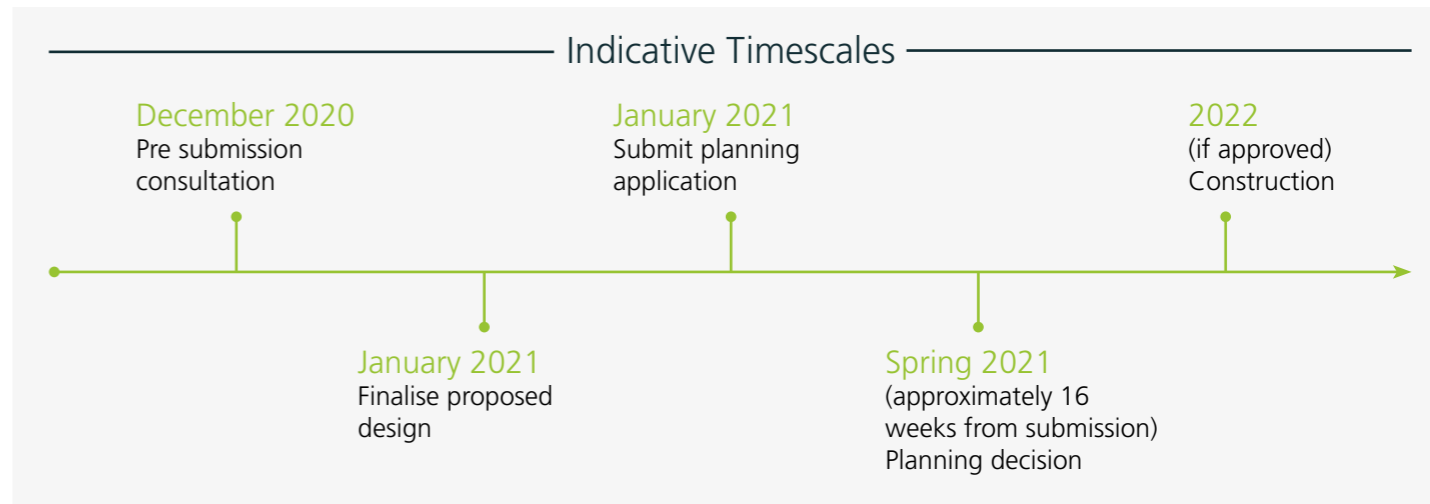
You are invited to attend our online public consultation webinar and Q&A session event. The webinar will be a ten-minute presentation by the project team where they will outline the draft proposals. During the Q&A session which will follow the webinar you'll have the opportunity to ask any questions you may have about the draft proposals with members of the project team.

The webinar will be recorded and hosted on our public consultation website so that you can watch it again or see it if you are unable to watch it live. You can of course get in contact with the project team at any time, through our public consultation website: www.bsrenergy.com/coldharbour-farm-solar-park/

You can register to attend our online public consultation event by visiting our website www.bsrenergy.com/coldharbour-farm-solar-park/ and completing the webinar registration form. You will then receive an email with details on how to join the public consultation webinar.

3 Visit the dedicated public consultation website: www.bsrenergy.com/coldharbour-farm-solar-park/

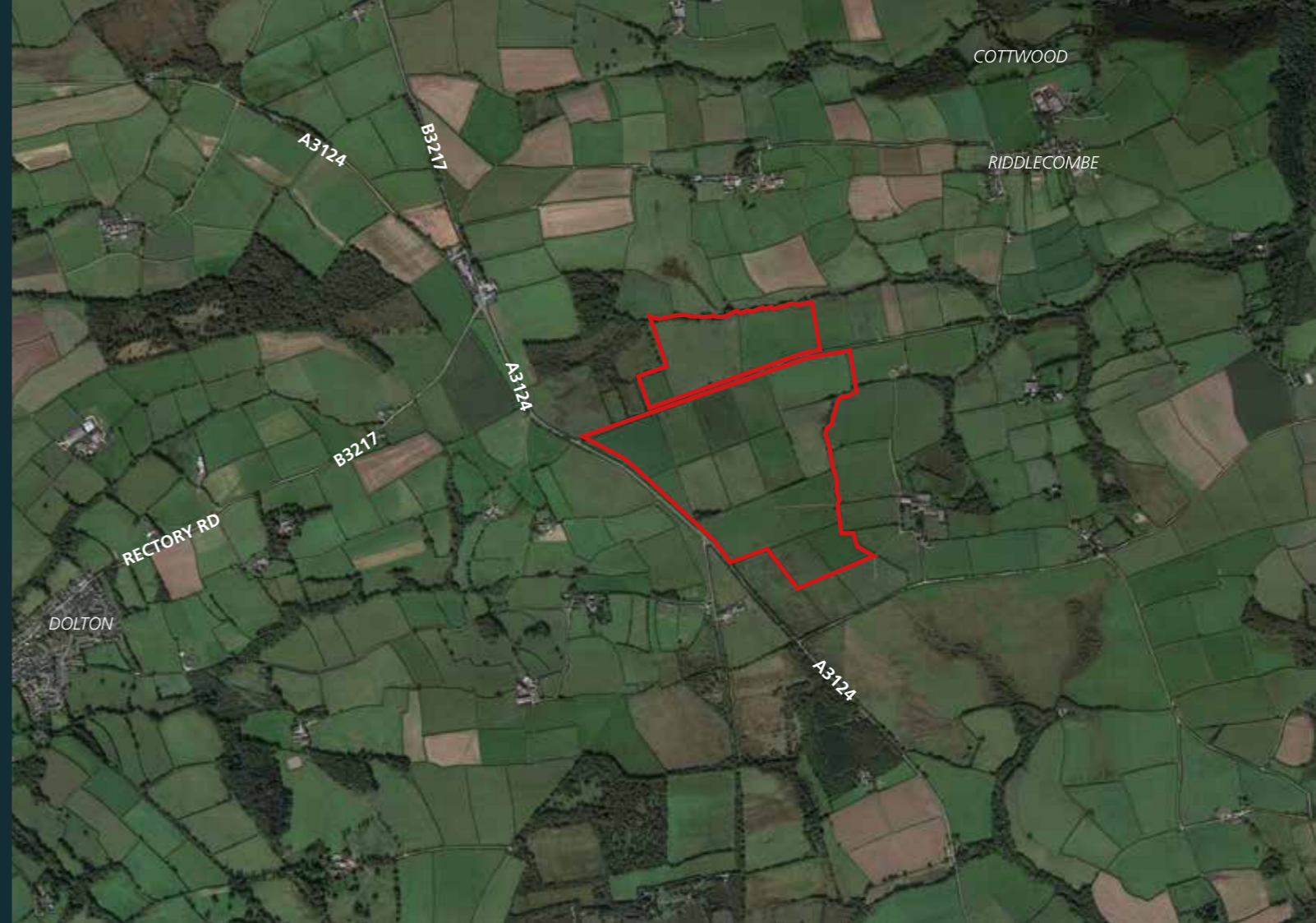
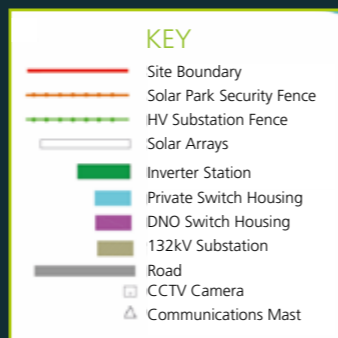
We have set up a dedicated public consultation website, where you can find information about our draft proposals and provide feedback.





Where is the proposed Coldharbour Farm Solar Park?

The project is situated off the A3124 and is approximately 1.7 miles east of the village of Dolton and 1-mile south-west of Riddlecombe. The approximately 160 acres (64.75Ha) site will be located in several fields which are currently used for livestock farming. In addition to having solar panels on the site, the proposal also includes biodiversity and landscape enhancement measures, such as the gapping up of existing hedgerows to ensure there are minimal visual and environmental impacts.





BSR
Energy

British Solar Renewables (BSR) is a leading renewable energy developer and provider of expert services to the renewable energy industry. The company was founded in 2010 from when it has grown into one of the largest integrated developers in the UK with over 350MW of ground mounted solar PV parks successfully installed to date.

Have your say

Please take your time to consider the information within this brochure, and don't hesitate to contact a member of our team should you have any questions or matters you need to be clarified.

We would be grateful if you could answer the feedback form and let us have your contact details for the purpose of informing the project design and providing feedback to the Council.

For further information, please do not hesitate to email peter.elms@alpacacommunications.com



Register for updates

Please visit www.bsrenergy.com/coldharbour-farm-solar-park/ where information about our proposals will be updated, and where you can register to be receive updates.

feedback form

To return your completed feedback form please tear it from the brochure, insert into the enclosed pre-paid envelope and pop it in the post by **Friday 1st January 2021**. Alternatively, you can return your form via email to peter.elms@alpacacommunications.com

Title: Name:

Address:

Postcode:

Email: Telephone:

1. Has this local resident leaflet been helpful in understanding our proposal?

- Yes No Not sure

2. What is the most important issue to you about our proposal, where 1 is of highest importance and 8 is of least importance?

- | | | |
|--|---|--|
| <input type="checkbox"/> Construction traffic | <input type="checkbox"/> Landscape impact | <input type="checkbox"/> Loss of agricultural land |
| <input type="checkbox"/> Increasing biodiversity | <input type="checkbox"/> Visual impact | <input type="checkbox"/> Noise |
| <input type="checkbox"/> Climate change | <input type="checkbox"/> Residential amenity impact | |

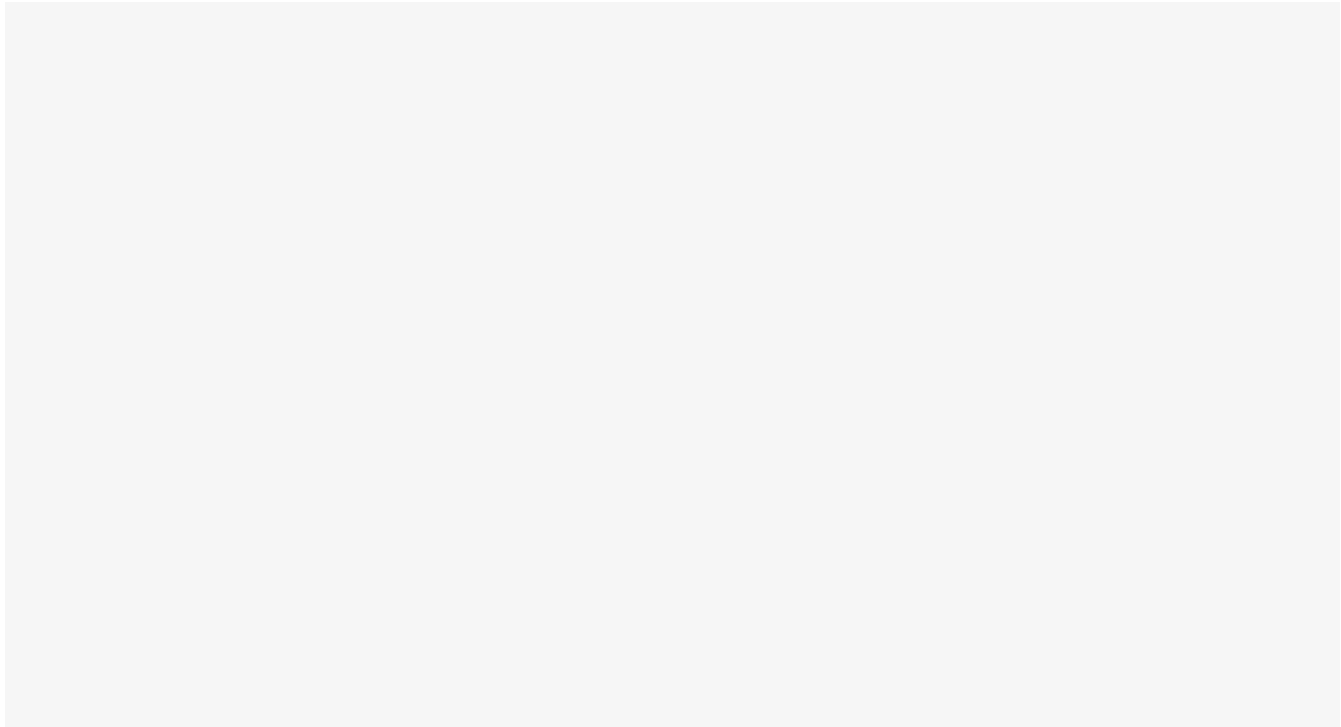
3. With regards to the proposals you have read about within this leaflet, are you:

- In favour In objection Of no opinion

4. Your views are important to us, if you'd like us to keep in touch how would you like us to contact you?

Website Email Newsletter SMS

5. Any other comments?



Thank you for taking the time to fill out our feedback form, your personal details including your name, address and contact details may be included as part of a consultation report submitted with this application to Torridge District Council. If you prefer your details do not be shared, please tick here .